



THANK YOU!

Through your heartfelt gifts and volunteer service, our residents had a wonderful Christmas! It is a sheer joy to see faces light up as gifts are opened, Santa's hugs shared, and the message of God's greatest Gift given—it's all a blessing. We thank our supporting churches, UMW circles, men's groups, mission teams, youth volunteers, Sunday School classes, and Christmas Wish grantors. Without your support, none of this would have been possible.

Mission Fairs

Many churches support various missions, from local to state; national to international. Recently, our Church & Community Engagement Coordinators Sherri Buehl and Rose Darling participated in several Missions Fairs.

We are here to help you plan and implement your own church and community mission fair.

Night to Shine Prom

Night to Shine—sponsored by the Tim Tebow Foundation—is an unforgettable prom night experience, centered on God's love, for people with special needs ages 14+. On one special night, 721 churches from around the world came together to host Night to Shine for approximately 115,000 honored guests through the support of 215,000 volunteers! On February 7, 2020, **Norwalk First United Methodist Church**, hosted its second Night to Shine prom. Flat Rock

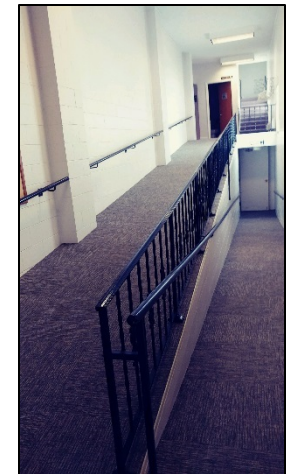
residents got decked out for a night of glitz and glamor. Jim, Lizzie, Eric, Sarah R., Sarah M., Jon, Twyla, Joe, and Carrie Jo attended from FRCC and many people from our Community Services homes joined in on the fun! For Photos and videos from the Norwalk Night to Shine, visit: <http://bit.ly/2T58MQ1>

Access/Disability Awareness

Ramps are one way to increase accessibility in order to reach areas of churches. The **Broadway UMC** in New Philadelphia installed ramps to make access available between the sanctuary level and Sunday school classes during a remodel in 1983. **Kidron Mennonite Church** installed a ramp during a remodeling project in 1968. The lengthy ramp leads from the rear parking lot entrance to the sanctuary. Architecturally, not all church buildings are ramp-friendly, and an elevator may be the better solution. In our next issue, we will share

lifting stories of how elevators aid in accessibility.

In the coming issues of Faith Connections, other churches will be highlighted. If your church has ideas or stories to share, please send them to rdarling@flatrockhomes.org.



**On Your Mark...
Get Set...Go!!!**

Register now for the Dick Parks Memorial Race at the Rock

You, your family, friends, and church are invited to participate in the **Dick Parks Memorial Race at the Rock, Saturday, May 2, 2020.**



This is the 15th year for the race benefitting those served by Flat Rock Homes, Care Center, and Community Services! Register online!

- 5K Race
- 1-Mile Walk
- 1-Mile Run
- Kids Fun Run (10 & under)
- Inspirational race (for individuals with ID/DD)
- Wall of Hope. Partner with us to continue to meet the needs of those we serve!
- Visit www.flatrockhomes.org for additional information and to register.

Come Visit us at Flat Rock

We love having visitors, and volunteer groups!
Contact us to schedule a tour! We would love to see you!

How May We Be of Service?

We are here to help with your mission focus programs, Sunday pulpit-supply, Access/Disability Awareness programs and more. Karen Kilgo, President/CEO with Deaconess Sherri Buehl, and Rose Darling, Church and Community Engagement Coordinators are available to meet your special programming needs.

Flat Rock Homes is a mission-minded ministry for all faiths.

For more information, contact
kkilgo@flatrockhomes.org
sbuehl@flatrockhomes.org
rdarling@flatrockhomes.org

You Can Help Transform Lives Through:

- **Monetary Gifts:**
 - Give to an appeal
 - Set up a monthly donation
 - Remember Flat Rock Homes in your will
- **In-Kind Gifts:**
 - Drop off or send items from NEEDS or WISH LISTS
 - Shop Amazon Smile
 - Volunteer
- **Wish List:**
 - Some top needs include new adult bicycle helmets, laundry detergent, toilet paper, paper towels, and toothpaste. Visit our website www.flatrockhomes.org for the full needs list.
- **Large Item Needs:**
 - Cars or Mini Vans, and Wheelchair Accessible Vans.

IN THE NEXT ISSUE:

Ten Years Later: From Arson's Ashes to Total Accessibility: How Salem Alliance UMC turned around a disaster.
Spotlight on Flat Rock Care Center Resident, Cori Restoring Hope, and more!



Flat Rock
Restoring Hope. Transforming Lives. Living Faith.

The Mission Statement of Flat Rock Homes

**Restoring Hope
Transforming Lives
Living Faith**